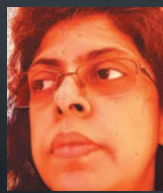


Choosing words with confidence in form of uniqueness is a kind of *playing* chess at Literature. King, queen, bishop, rook, and pawn have their known capacities, but the possibilities of combination are infinite and unpredictable. *Perception* on same words, from several essays, speaking or thinking at various temperaments and circumstances to the hearer and listener proportionately makes the same human mind to act with different physiology. To achieve a move is always to solve a problem, and is an essentially a creative art: "As the waves make towards the pebbled shore"

The work of art in existing book has a personal and literary style progressed with visual image, and determined with emotions and self-analysis, also, written very distinctly on human works of immortal beauty and works of nature. An eminent reader of the book, with manner of expression, must act sometimes as a thoughtful human with his general intelligence of his age: the spectacle is the collective life of humanity. No human being knows the whole about himself: It reminds on the Browning's fine poem, 'How it Strikes a Contemporary', who walked about, took note of everything, looked at the new house building, and poked his stick into the mortar.



Of Google's recognized books, the author of 'Realization' and 'The Immortal Fly: Eternal Whispers', Author Rituparna Ray Chaudhuri is a teacher and Critic on Academic Research of English and British Literature recognized at different websites as Scholar on Citation together (MLA, APA, Chicago, Harvard, Vancouver).



6.00 x 9.00
229 mm x 152 mm

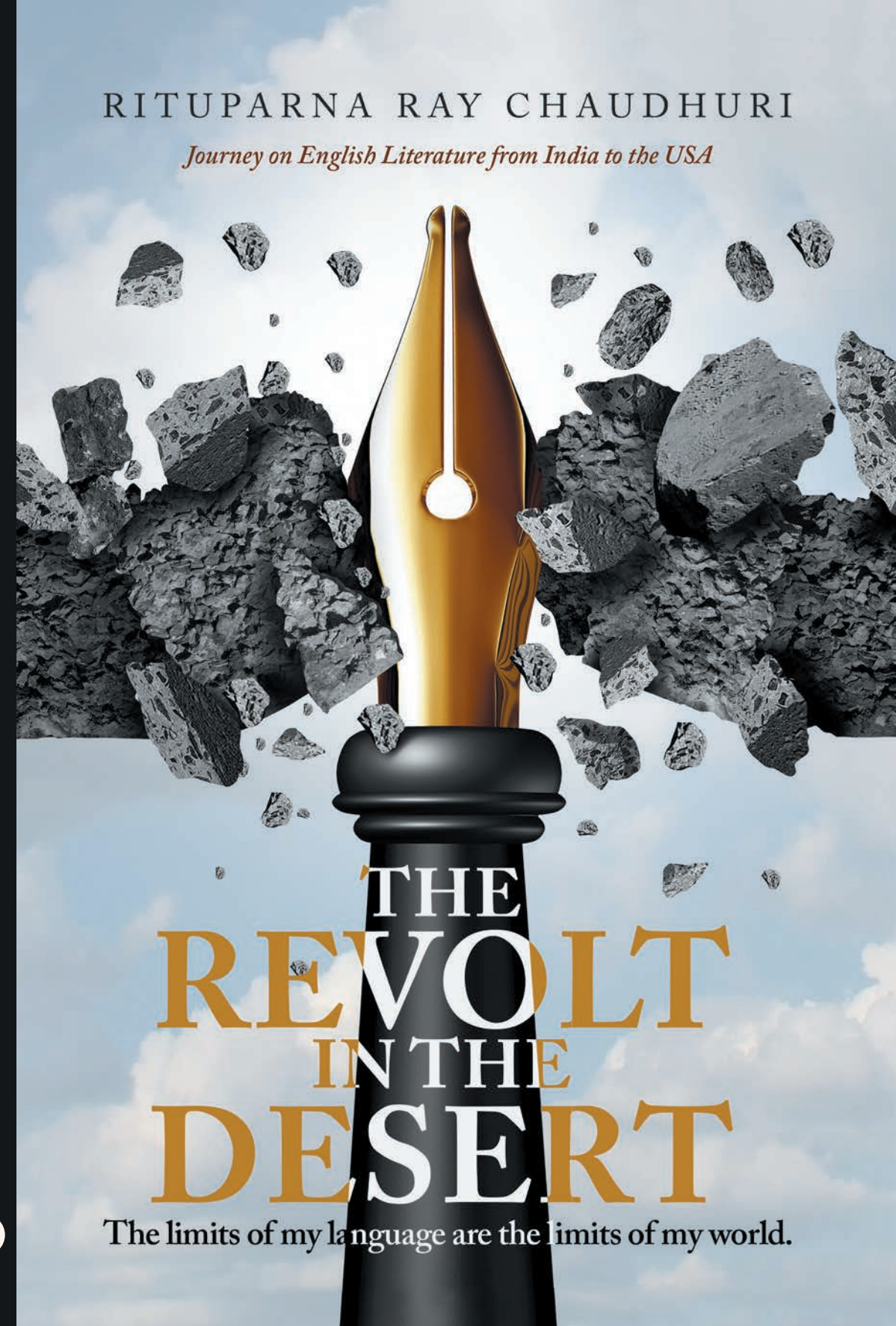
.458
11.63
mm

RITUPARNA RAY CHAUDHURI

Journey on English Literature from India to the USA

THE REVOLT IN THE DESERT

RITUPARNA RAY CHAUDHURI



THE REVOLT IN THE DESERT

The limits of my language are the limits of my world.

6.00 x 9.00
229 mm x 152 mm

Content Type: Black & White
Paper Type: Creme
Page Count: 200
File Type: InDesignIDML
Request ID: CSS3840057



9 781543 708875